

**Table 4.1 New Freshmen SAT Scores by Campus  
Fall 2004**

Score	UVI (All)		St. Thomas		St. Croix	
	Count	Percent	Count	Percent	Count	Percent
<b>VERBAL</b>						
200-299	26	7	14	6	12	9
300-399	121	34	70	32	51	36
400-499	151	42	99	45	52	37
500-599	53	15	31	14	22	16
600-699	8	2	5	2	3	2
700-800	0	0	0	0	0	0
<b>Total</b>	<b>359</b>	<b>100</b>	<b>219</b>	<b>100</b>	<b>140</b>	<b>100</b>
<b>MATH</b>						
200-299	48	13	27	12	21	15
300-399	138	38	77	35	61	44
400-499	124	35	83	38	41	29
500-599	44	12	30	14	14	10
600-699	5	1	2	1	3	2
700-800	1	0	1	0	0	0
<b>Total</b>	<b>359</b>	<b>100</b>	<b>219</b>	<b>100</b>	<b>140</b>	<b>100</b>

**Table 4.2 UVI New Freshmen SAT Scores by Gender  
Fall 2004**

Score	UVI (All)		Female		Male	
	Count	Percent	Count	Percent	Count	Percent
<b>VERBAL</b>						
200-299	26	7	17	7	9	9
300-399	121	34	90	35	31	31
400-499	151	42	113	44	38	38
500-599	53	15	36	14	17	17
600-699	8	2	3	1	5	5
700-800	0	0	0	0	0	0
<b>Total</b>	<b>359</b>	<b>100</b>	<b>259</b>	<b>100</b>	<b>100</b>	<b>100</b>
<b>MATH</b>						
200-299	48	13	41	16	7	7
300-399	138	38	101	39	37	37
400-499	125	35	86	33	39	39
500-599	42	12	28	11	14	14
600-699	5	1	2	1	3	3
700-800	1	0	1	0	0	0
<b>Total</b>	<b>359</b>	<b>100</b>	<b>259</b>	<b>100</b>	<b>100</b>	<b>100</b>

**Table 4.3 New Freshmen SAT Scores by Campus and Gender  
Fall 2004**

Score	UVI (All)		St. Thomas		St. Croix	
	Female	Male	Female	Male	Female	Male
<b>VERBAL</b>						
200-299	17	9	8	6	9	3
300-399	90	31	55	15	35	16
400-499	113	38	77	22	36	16
500-599	36	17	19	12	17	5
600-699	3	5	2	3	1	2
700-800	0	0	0	0	0	0
<b>Total</b>	259	100	161	58	98	42
<b>MATH</b>						
200-299	41	7	23	4	18	3
300-399	101	37	58	19	42	18
400-499	86	39	59	23	28	15
500-599	28	14	18	12	10	3
600-699	2	3	2	0	0	3
700-800	1	0	1	0	0	0
<b>Total</b>	259	100	161	58	98	42

**Table 4.4 New Freshmen Verbal SAT Scores Summary Statistics  
by Campus and Gender  
Fall 2004**

Gender	Five-Number Summary						
	Min	1st Quartile	Median	3rd Quartile	Max	Mean	Std. Deviation
<b>UVI (All)</b>							
Female	200	360	400	460	670	410	82
Male	200	368	415	480	650	423	97
All	200	360	410	470	670	413	86
<b>ST. THOMAS</b>							
Female	200	360	410	460	670	413	78
Male	200	370	420	500	650	424	99
All	200	360	420	470	670	416	84
<b>ST. CROIX</b>							
Female	200	350	400	480	600	406	88
Male	200	360	410	470	650	420	90
All	200	350	400	470	650	410	89

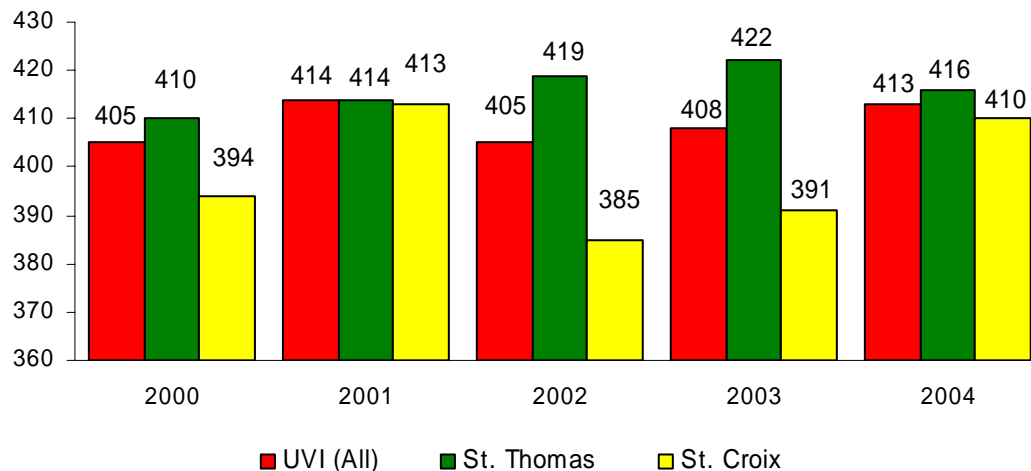
**Table 4.5 New Freshmen Math SAT Scores Summary Statistics  
by Campus and Gender  
Fall 2004**

Gender	Five-Number Summary						
	Min	1st Quartile	Median	3rd Quartile	Max	Mean	Std. Deviation
<b>UVI (All)</b>							
Female	200	320	390	440	600	375	88
Male	220	360	410	460	580	416	82
All	200	330	390	440	650	384	99
<b>St. Thomas</b>							
Female	200	330	390	440	720	392	93
Male	200	370	410	465	580	415	83
All	200	340	400	450	720	398	91
<b>St. Croix</b>							
Female	200	310	365	420	570	372	85
Male	200	340	390	460	660	408	99
All	200	315	380	440	660	383	91

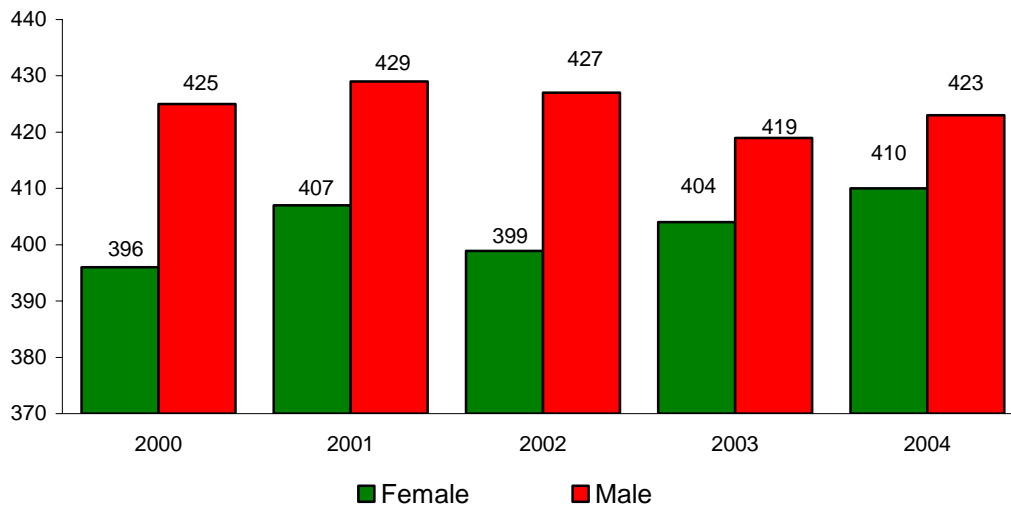
**Table 4.6 New Freshmen Mean Verbal SAT Scores by Campus and Gender  
Fall 2000-2004**

Gender	Fall				
	2000	2001	2002	2003	2004
<b>UVI (All)</b>					
Female	396	407	399	404	410
Male	425	429	427	419	423
All	405	414	405	408	413
<b>St. Thomas</b>					
Female	405	405	414	416	413
Male	425	433	445	440	424
All	410	414	419	422	416
<b>St. Croix</b>					
Female	382	411	371	387	406
Male	424	419	414	399	420
All	394	413	385	391	410

**Figure 4.1 New Freshmen Mean Verbal SAT Scores by Campus  
Fall 2000 to 2004**



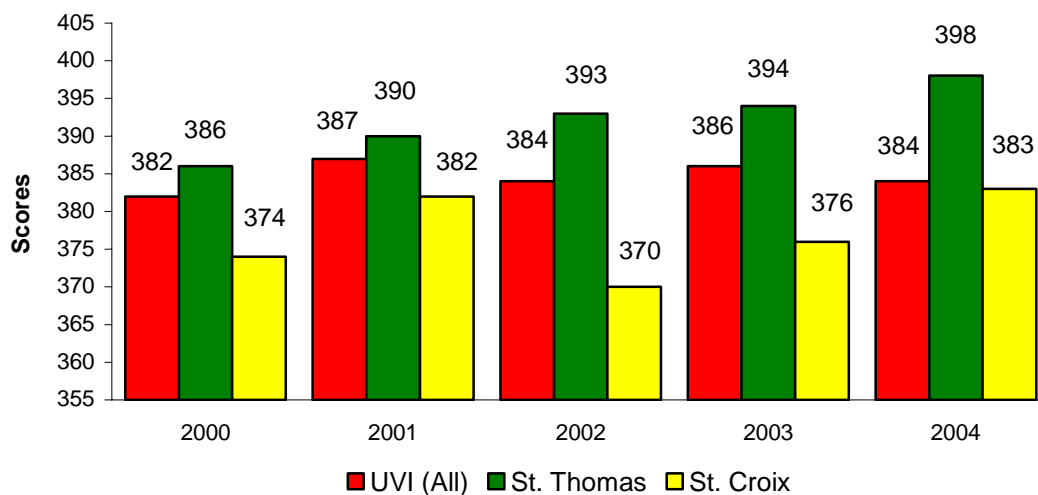
**Figure 4.2 New Freshmen Mean Verbal SAT Scores by Gender  
Fall 2000 to 2004**



**Table 4.7 New Freshmen Mean Math SAT Scores  
by Campus and Gender  
Fall 2000-2004**

Gender	2000	2001	2002	2003	2004
<b>UVI (All)</b>					
Female	376	375	375	378	375
Male	402	416	413	405	416
All	382	387	384	386	384
<b>St. Thomas</b>					
Female	383	374	389	386	392
Male	395	423	414	419	415
All	386	390	393	394	398
<b>St. Croix</b>					
Female	360	376	349	366	372
Male	414	396	413	393	408
All	374	382	370	376	383

**Figure 4.3 Freshmen Mean Math SAT Scores by Campus  
Fall 2000 to 2004**



**Figure 4.4 New Freshmen Mean Math SAT Scores by Gender  
Fall 2000 to 2004**

